

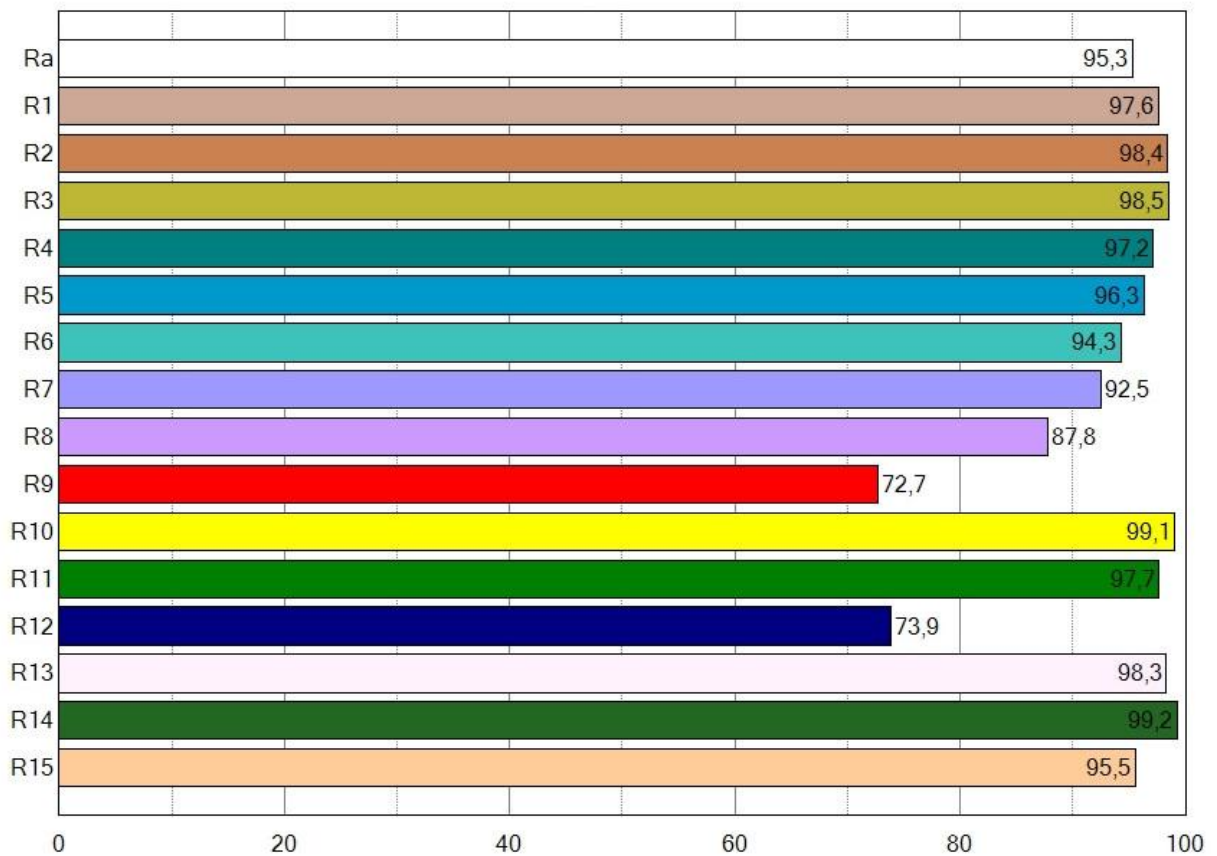
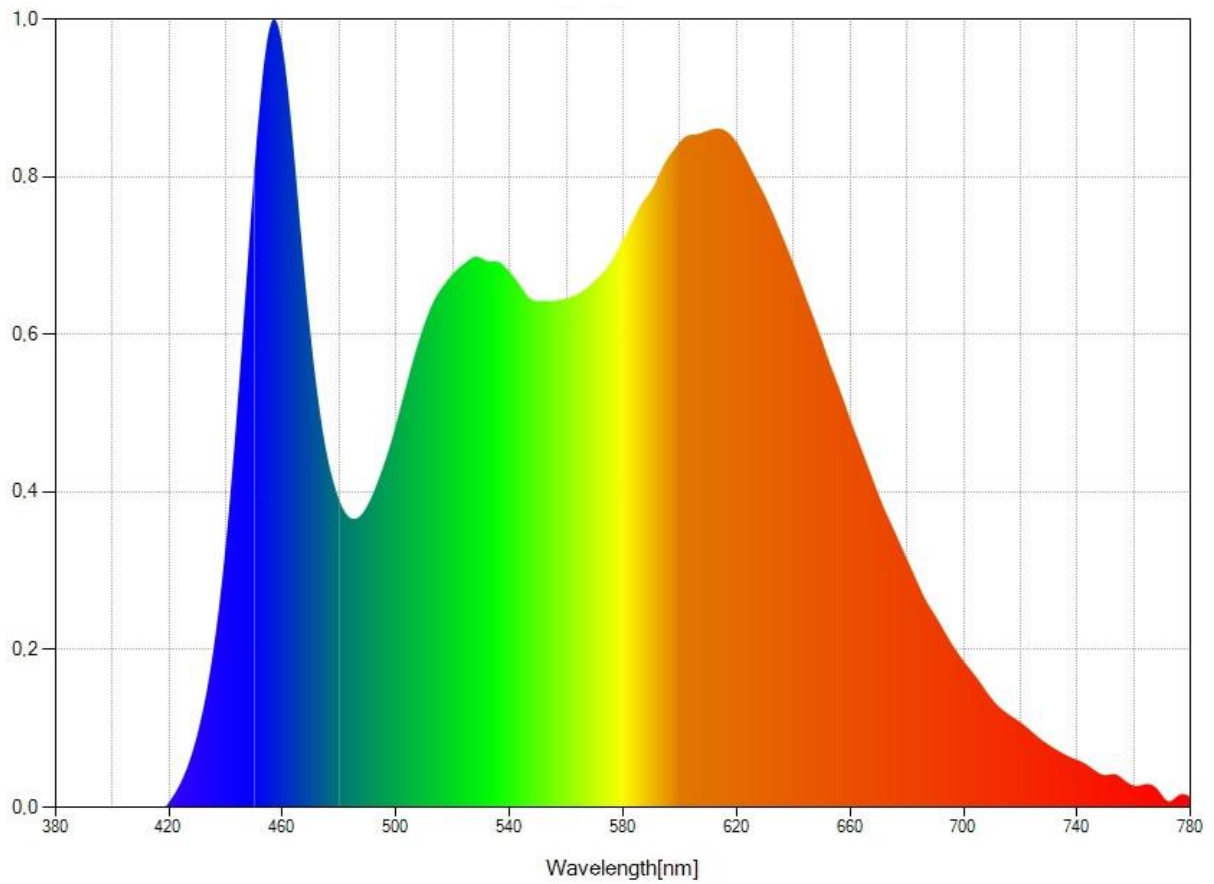
MZ-LIGHTING

Photometric Measurements

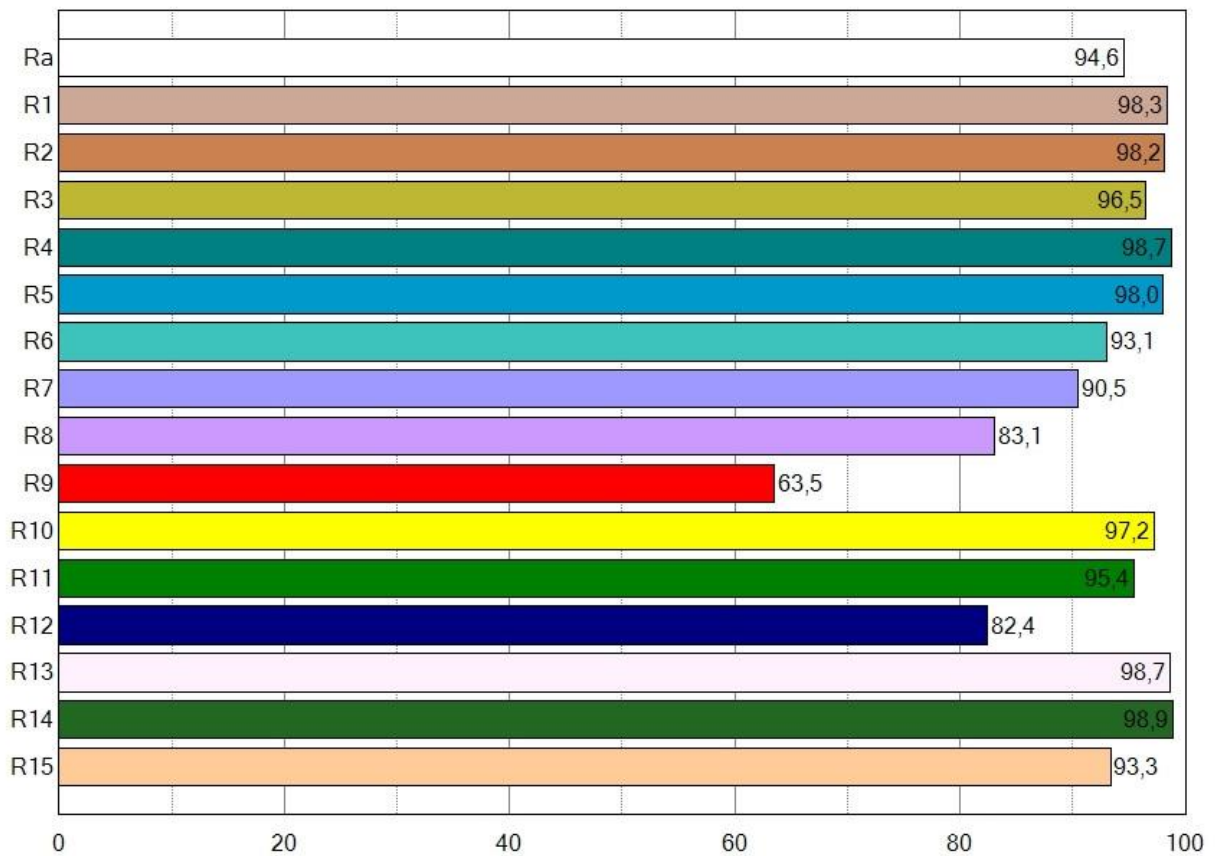
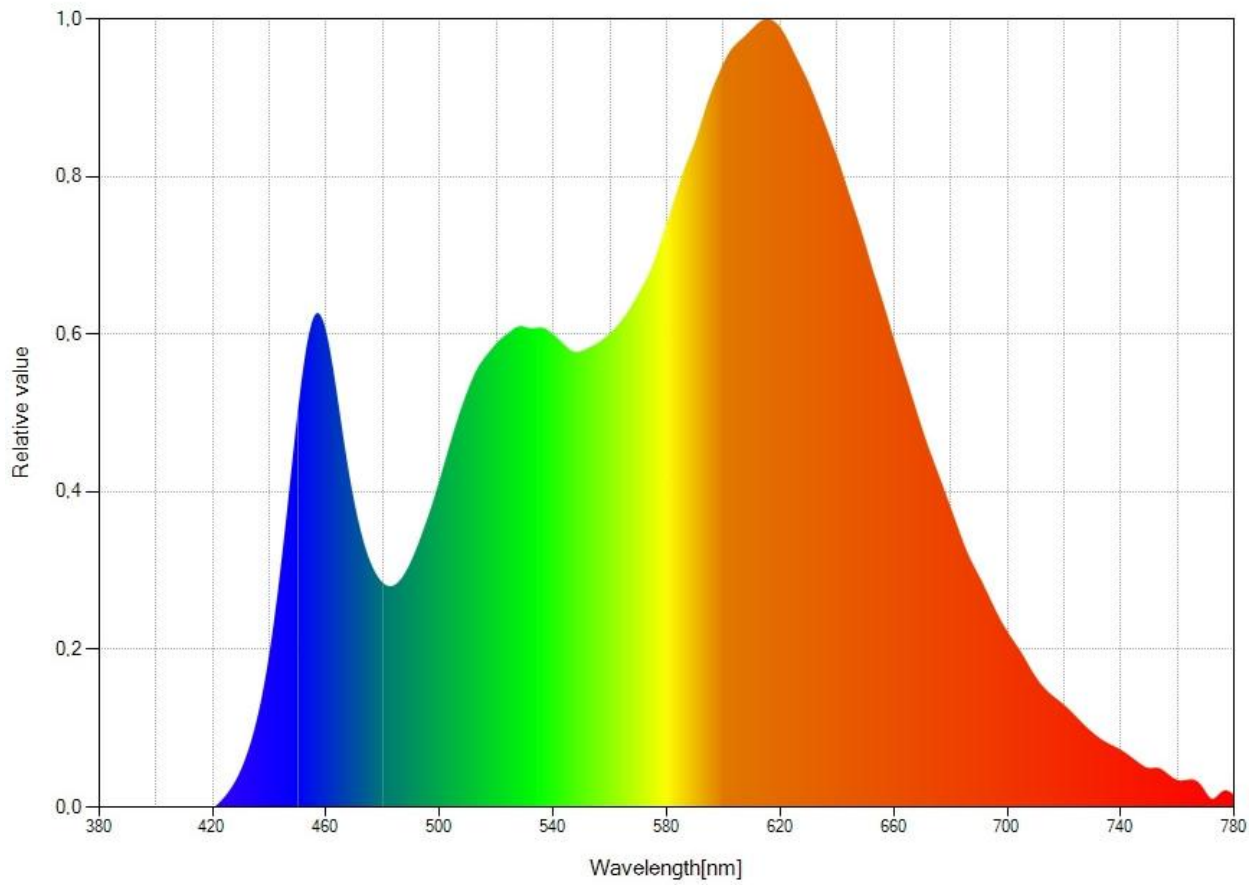
MZ-LED336

MZ-LED176

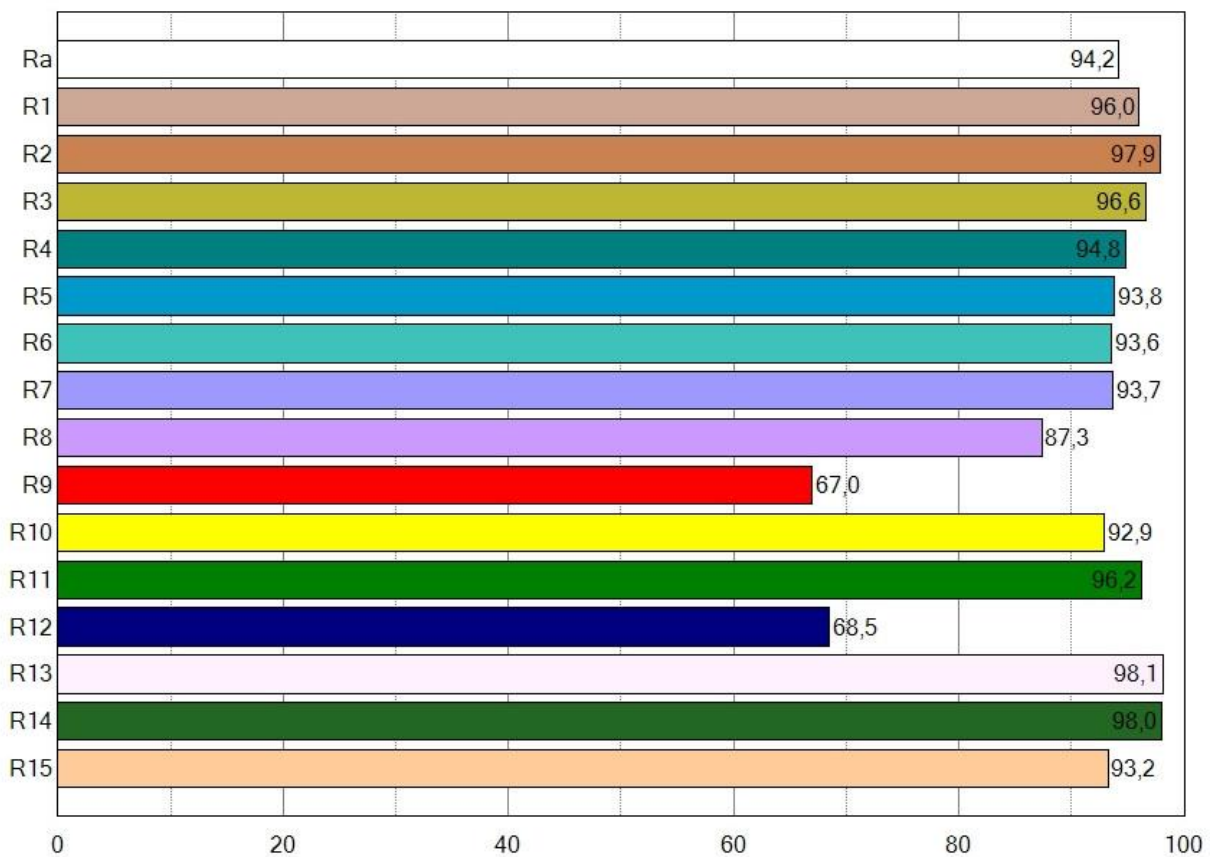
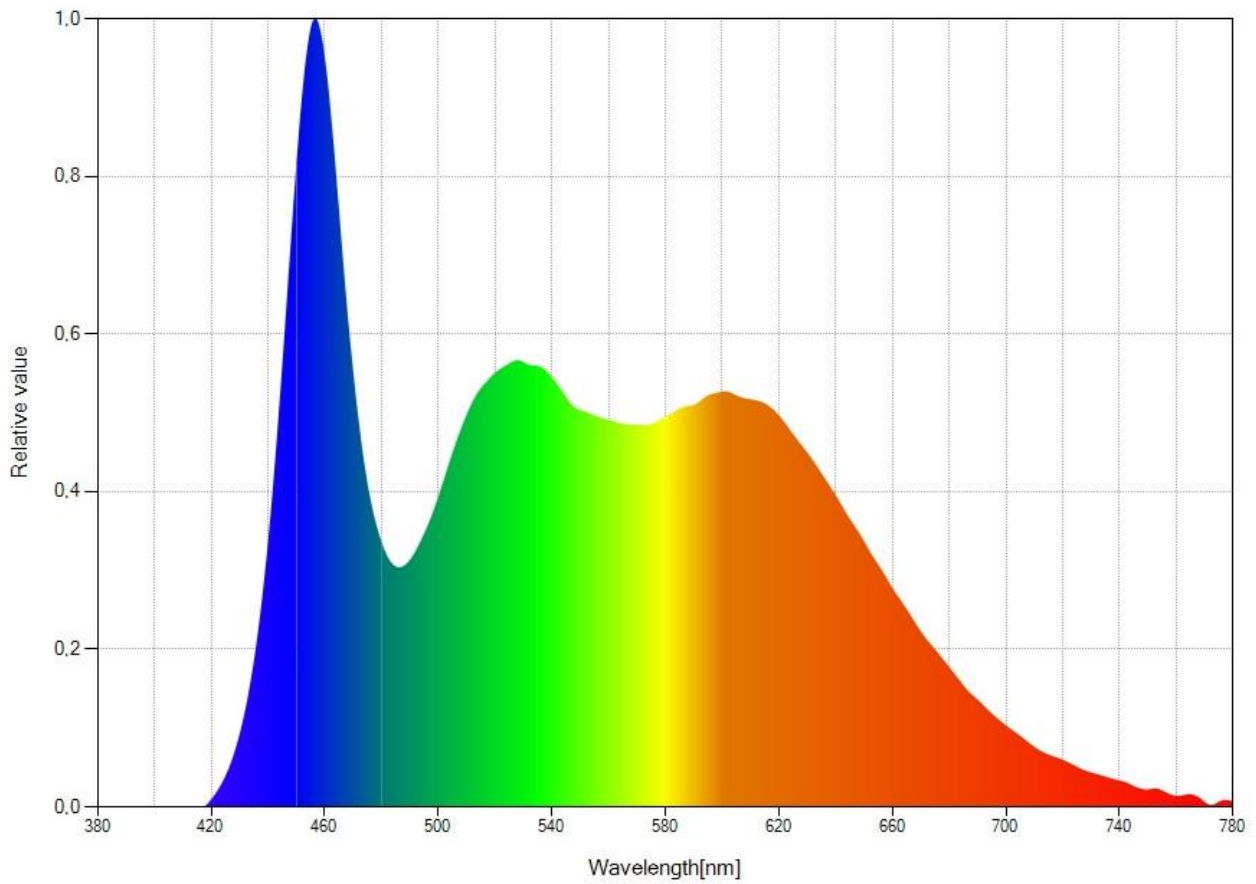
Color Temperature: 4200K
CRI: 96.8
Extended CRI: 95.3
Position of the knob: Five (5)



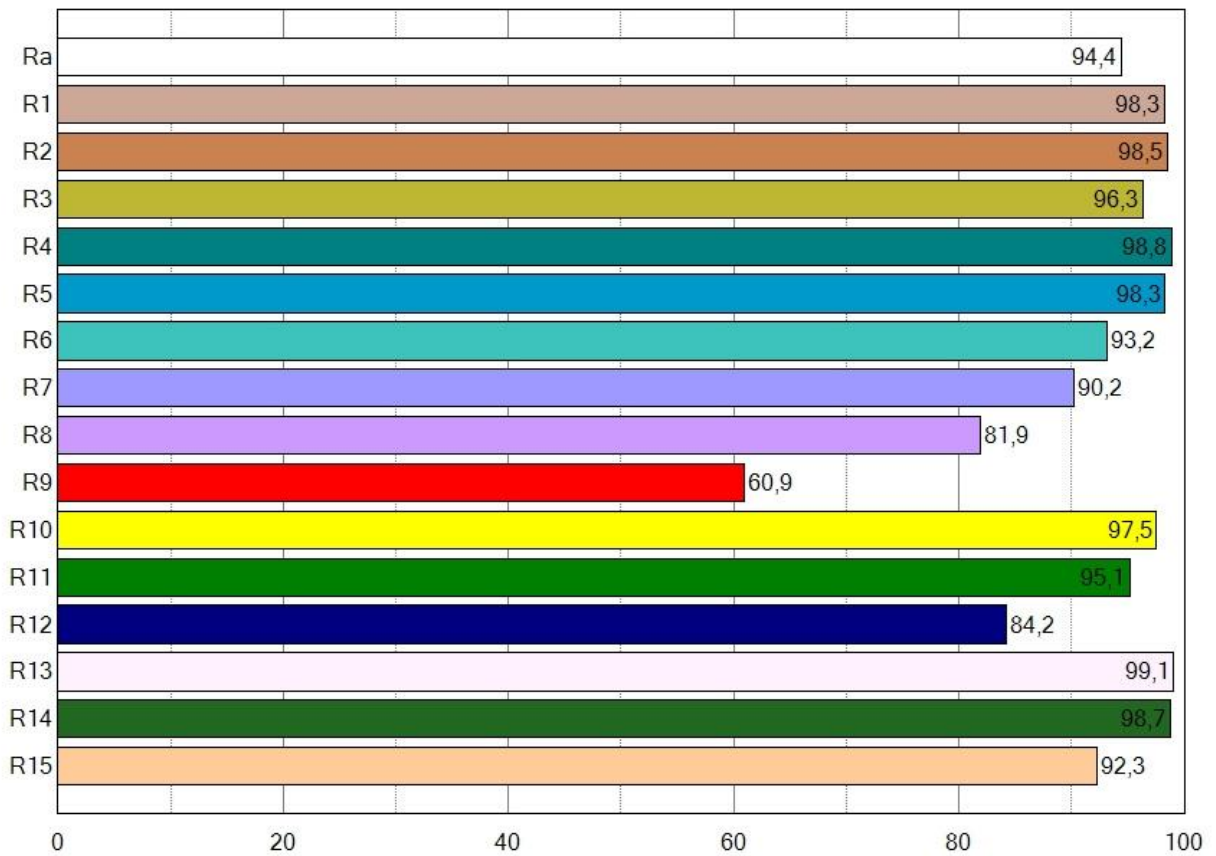
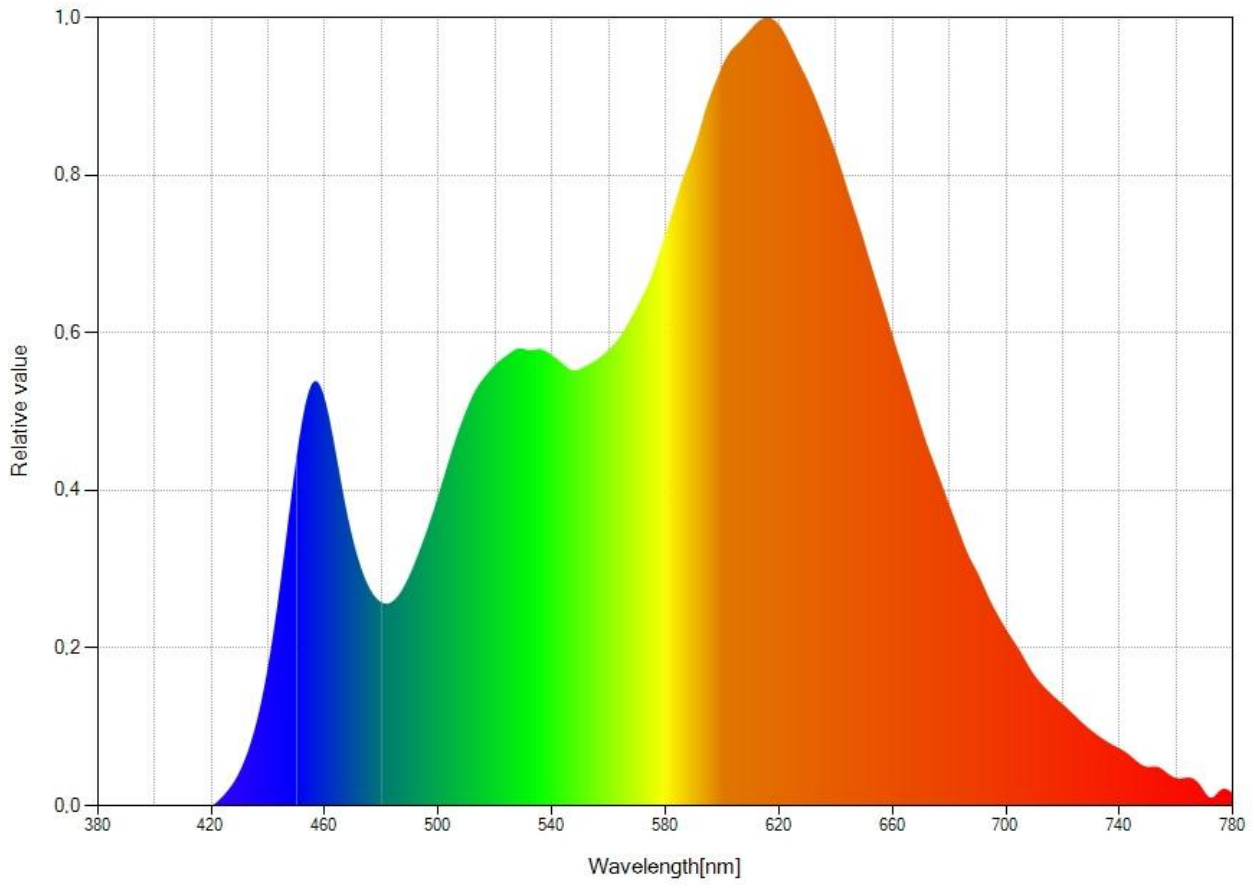
Color Temperature: 3200K
CRI: 95.9
Extended CRI: 94.6
Position of the knob: One (1)
Light Filter needed (Target 3200K): None



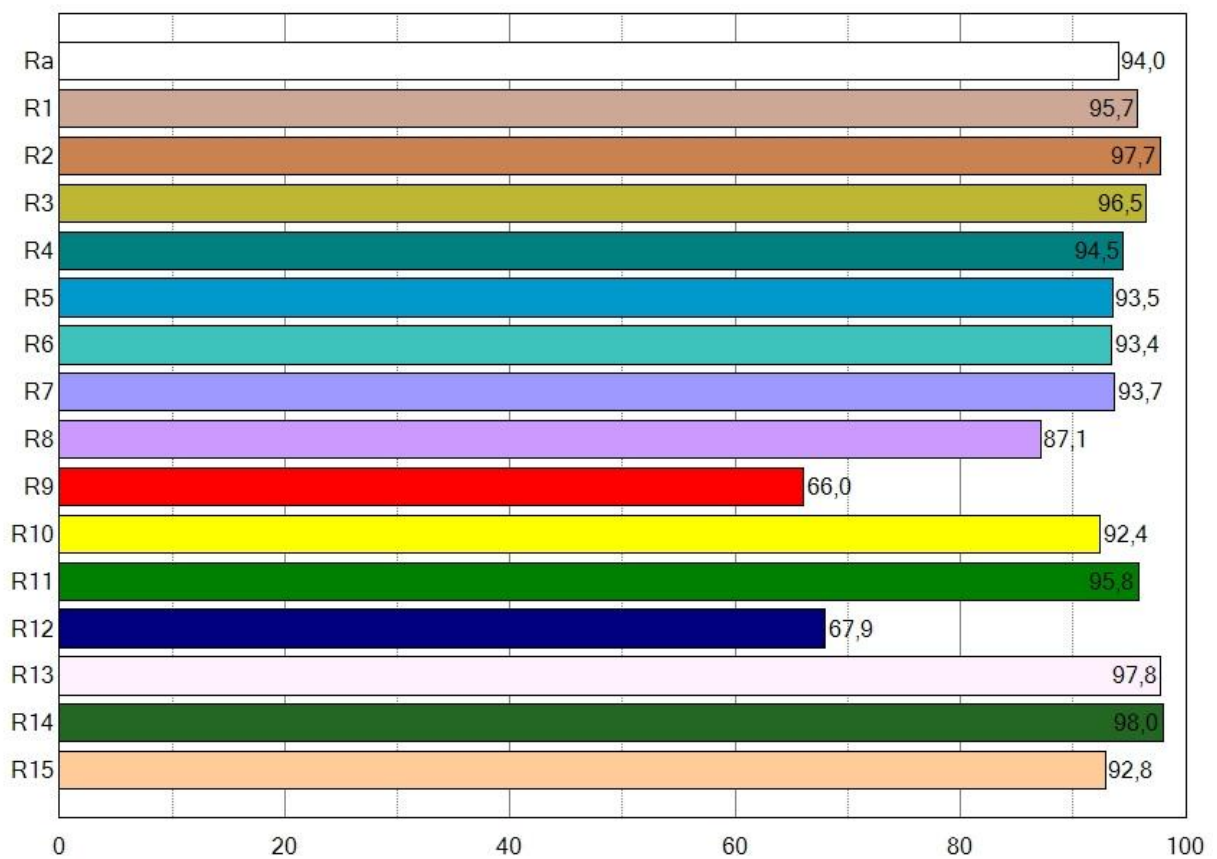
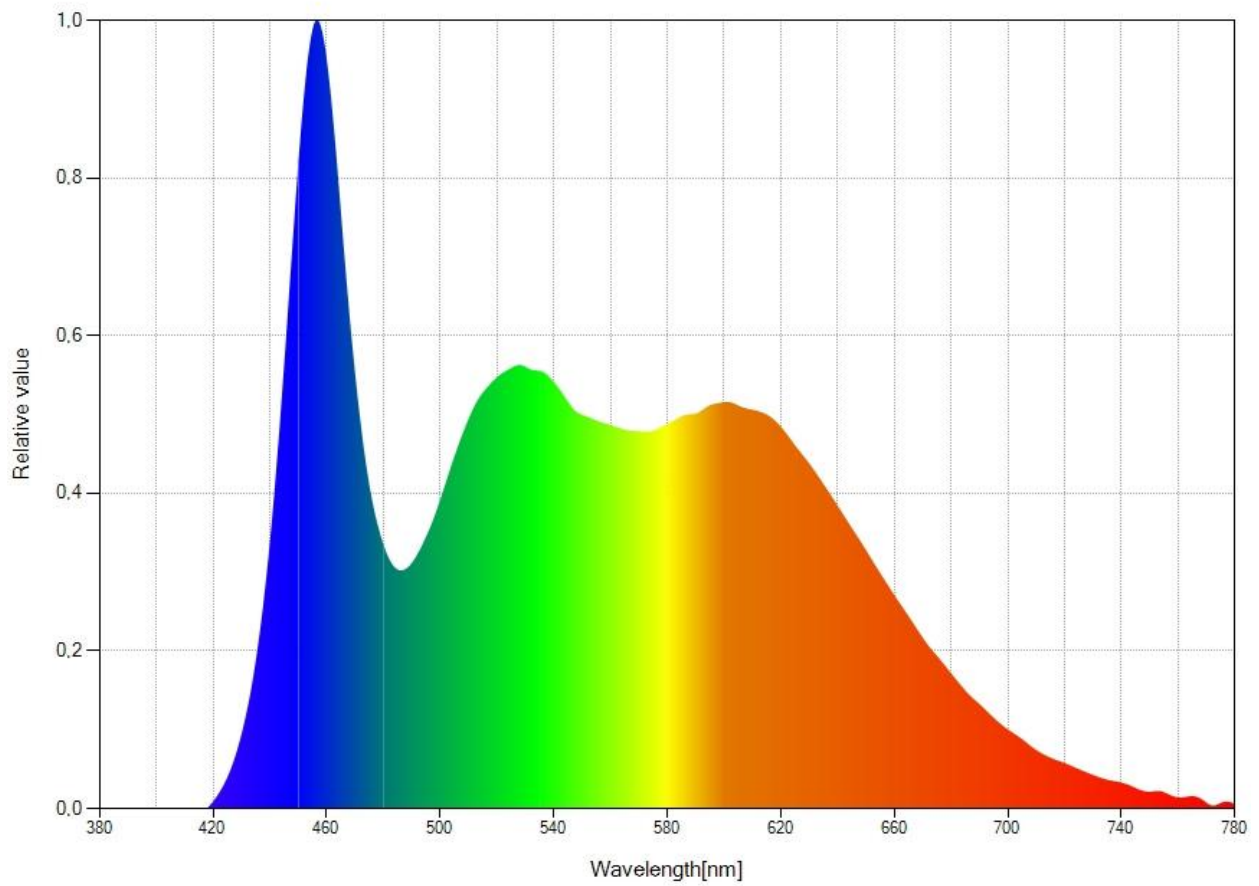
Color Temperature: 5600K
CRI: 95.7
Extended CRI: 94.3
Position of the knob: Nine (9)
Light Filter needed (Target 5600K): None



Color Temperature: 3100K
CRI: 95.8
Extended CRI: 94.4
Position of the knob: Zero (0)
Light Filter needed (Target 3200K): None



Color Temperature: 5700K
CRI: 95.5
Extended CRI: 94
Position of the knob: Zero (10)
Light Filter needed (Target 5600K): None



Brightness @LUX

MZ-LED176

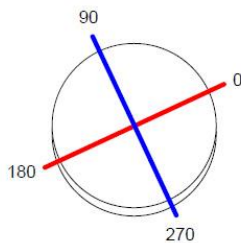
up to 7190Lum @1sq.meter coverage

MZ-LED336

up to 11900Lum @1sq.meter coverage

			120°			
Bicolor:7653	Cool:8042	Warm:7250	0.6m (2.08m Coverage)	Bicolor:12667	Cool:13306	Warm:12000
Bicolor:2755	Cool:2895	Warm:2610	1m (3.46m Coverage)	Bicolor:4560	Cool:4790	Warm:4320
Bicolor:689	Cool:724	Warm:653	2m (6.93m Coverage)	Bicolor:1140	Cool:1198	Warm:1080
Bicolor:306	Cool:322	Warm:290	3m (10.39m Coverage)	Bicolor:507	Cool:532	Warm:480
Bicolor:77	Cool:80	Warm:73	6m (20.78m Coverage)	Bicolor:127	Cool:133	Warm:120

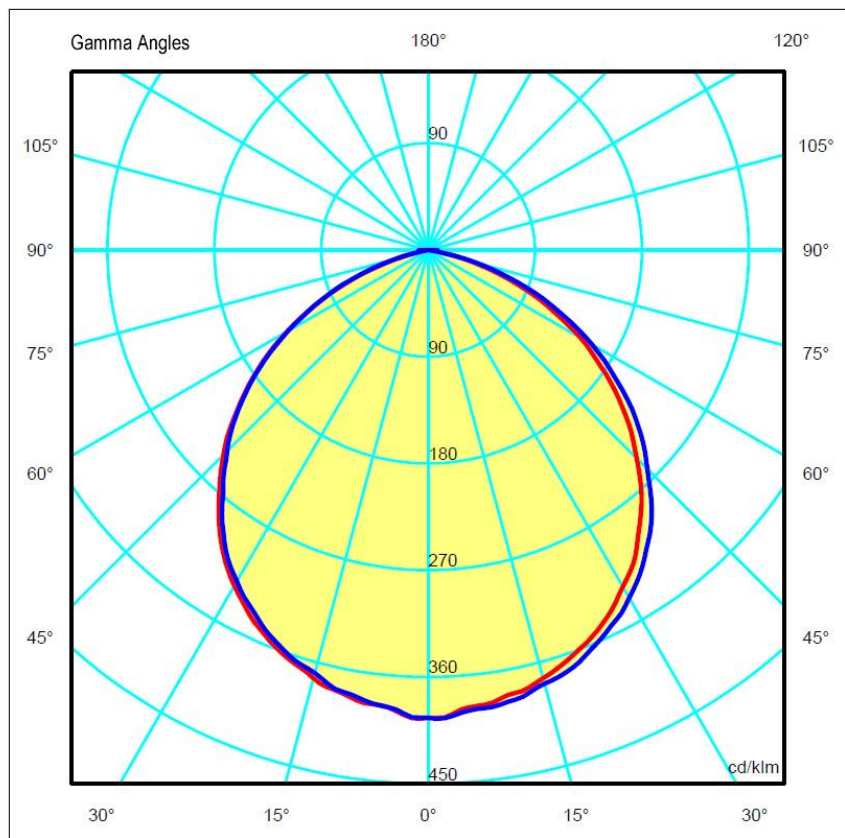
Diam=160mm



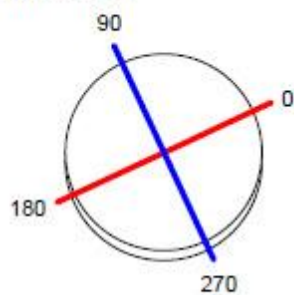
Semi-level C

180.0 — 0.0
270.0 — 90.0

ULOR 0.00 %
DLOR 100.00 %
RN 0.00 %



Diam=160mm



180.0 ——— 0.0
270.0 ——— 90.0

Semi-level C

